

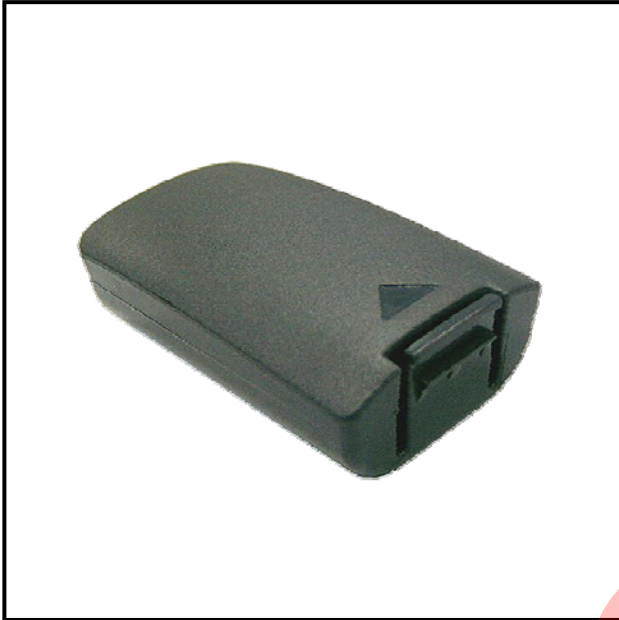


PRODUCT SPECIFICATION

Revision:2
Date:2011-12-21
Page: 1/1

Battery for Portable Data Collection Device

AS-HHP9500L



Models

Hand Held Products® Dolphin®
7900, 9500, 9550



Compatibility

Battery Model: 20000591-01

Physical Characteristics

Dimension: 80.0 X 41.4 X 23.0 mm (3.15 X 1.63 X 0.91 inch)

Weight: 115 g (4.06 oz.)

Plastic Material: ABS

Electrical Characteristics

Chemistry: Li-ion

Voltage: 7.4V

Capacity: Typical: 2600mAh; Minimum: 2500mAh

Cell: Sanyo UR18650FM

Operation Specification

Charging Voltage: 8.4 ~ 9.0 V

Charging Current: 0.5 ~ 1.0C

Discharging Current: 0.5 ~ 1.0C

Discharging End Voltage: 6.0 V

User Environment

Charging Temperature: ± 0 ~ +40°C (+32 ~ +104°F)

Discharging Temperature: -20 ~ +60°C (-4 ~ +140°F)

Storage Temperature: -20 ~ +50°C (-4 ~ +122°F)

Prolonged Storage Temp.: -20 ~ +30°C (-4 ~ +86°F)

Hand Held Products and Dolphin are registered trademarks of Hand Held Products, Inc.

Addvantech Limited

www.addvantech.com
sales@addvantech.com