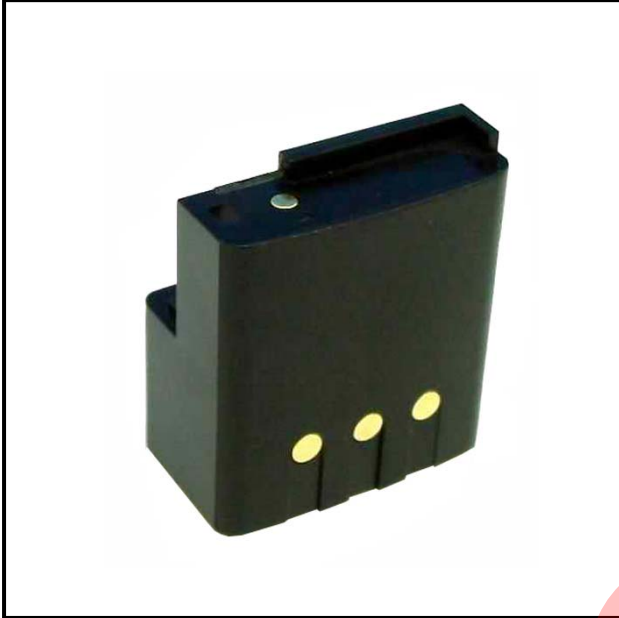




PRODUCT SPECIFICATION

Revision:1
Date:2011-7-1
Page: 1/1

Battery for Two-Way Radio AT-KY209CB



| | |
|---------------|-----------------------------|
| Models | Kyodo® KG209, Grundig MT209 |
|---------------|-----------------------------|

Compatibility

Battery Model: NH1100

Physical Characteristics

Dimension: 65.0 X 56.1 X 33.7 mm (2.55 X 2.20 X 1.32 inch)

Weight: 190 g (6.70 oz.)

Plastic Material: ABS

Electrical Characteristics

Chemistry: Ni-Cd

Voltage: 7.2V

Capacity: 1000mAh

Cell: JJJ J-AA1000A

Operation Specification

Charging Voltage: 8.4 ~ 11.4 V

Charging Current: 0.2 ~ 2.0C

Discharging Current: 0.2 ~ 2.0C

Discharging End Voltage: 6.0 V

User Environment

Charging Temperature: ± 0 ~ +50°C (+32 ~ +122°F)

Discharging Temperature: -30 ~ +60°C (-22 ~ +140°F)

Storage Temperature: -30 ~ +65°C (-22 ~ +149°F)

Prolonged Storage Temp.: -30 ~ +35°C (-22 ~ +95°F)

Addvantech Limited

www.addvantech.com
sales@addvantech.com